



PRODUCT ACCESSORIES

(Not Included with TV)

AC Central Power Supply	PDI-772HE
Individual AC Power Supply	PDI-750A
Support Arm	PDI-508C-7PIL
Support Arm Wall Bracket	PDI-179C, PDI-178C
Programming Remote Control	PD108-420

NOTE TO CABLE TV INSTALLER

This reminder is provided to call the cable TV systems installer's attention to Article 820-40 of the National Electrical Code. The code provides guidelines for proper grounding and, in particular, specifies that the cable ground shall be connected to the grounding system of the building, as close to the point of the cable entry as practical.

FCC

This equipment has been tested and found to comply with the limits for a Class B digital device, pursuant to part 15 of the FCC Rules. These limits are designed to provide reasonable protection against harmful interference when the equipment is operated in a residential or commercial installation. If this equipment does cause harmful interference to radio or television reception, which can be determined by turning the equipment off and on, the user is encouraged to try to correct the interference by one of more of the following measures:

- Reorient or relocate the receiving antenna.
- Increase the separation between the equipment and receiver.
- Connect the equipment into an outlet on a circuit different from that to which the receiver is connected.
- Consult the dealer or an experienced radio/TV technician for help.

MAINTENANCE AND SERVICING

Never remove the back cover of the TV; this can expose you to high voltage and other hazards. If the TV does not operate properly, unplug it and call an authorized service center or PDI.

DISCONNECTING DEVICE FROM MAINS

Main plug is the disconnecting device. The plug must remain readily operable.

INSTALLATION INSTRUCTIONS

These servicing instructions are for use by qualified service personnel only and should conform to all local codes. Read and follow the safety instructions before attempting this installation. To reduce the risk of electric shock, do not perform any servicing other than contained in the operating instructions unless you are qualified to do so.

PRODUCT MODIFICATION

Do not attempt to modify this product in any way without written authorization. Unauthorized modification could void the user's authority to operate this product.

TRADEMARKS

All brand names and product names in this manual are trademarks, registered trademarks, or trade names of their respective holder. *PDI* and *Better Solutions Are Within Reach* are registered trademarks of PDI Communication systems, Inc., Springboro, Ohio. Manufactured under license from Dolby Laboratories. Dolby and the double-D symbol are trademarks of Dolby Laboratories.

WARNINGS



CAUTION : To reduce the risk of electric shock do not remove cover (or back). No user serviceable parts inside. Refer servicing to qualified service personnel.



This symbol is intended to alert the user of the presence of uninsulated 'dangerous voltage' within the product's enclosure that may be of sufficient magnitude to constitute a risk of electric shock to persons.



This symbol is intended to alert the user of the presence of important operating and maintenance (servicing) instructions in the literature accompanying the appliance.



WET LOCATION

Apparatus shall not be exposed to dripping or splashing and no objects filled with liquids, such as vases, shall be placed on the apparatus.



RAIN AND MOISTURE

WARNING: To avoid the hazards of fire or electrical shock, DO NOT expose this television to rain or moisture.



OXYGEN ENVIRONMENT

WARNING: Do not use in any oxygen tent or oxygen chamber. Such use may cause a fire hazard.



CLEANING AND DISINFECTION

Clean the exterior of this television by removing dust with a lint-free cloth. To avoid damage to the surface of the television, do not use abrasive or chemical cleaning agents. Do not immerse this TV. To avoid damage to the surface of the TV, test a small portion of the TV's cabinet with any new disinfectant to verify that the disinfectant does not discolor or soften the enclosure.

Important Safety Instructions

PLEASE READ AND KEEP THESE INSTRUCTIONS. OBSERVE ALL WARNINGS AND FOLLOW ALL INSTRUCTIONS CONTAINED IN THESE SAFETY INSTRUCTIONS AND THOSE ON YOUR TELEVISION. RETAIN THESE INSTRUCTIONS FOR FUTURE USE.

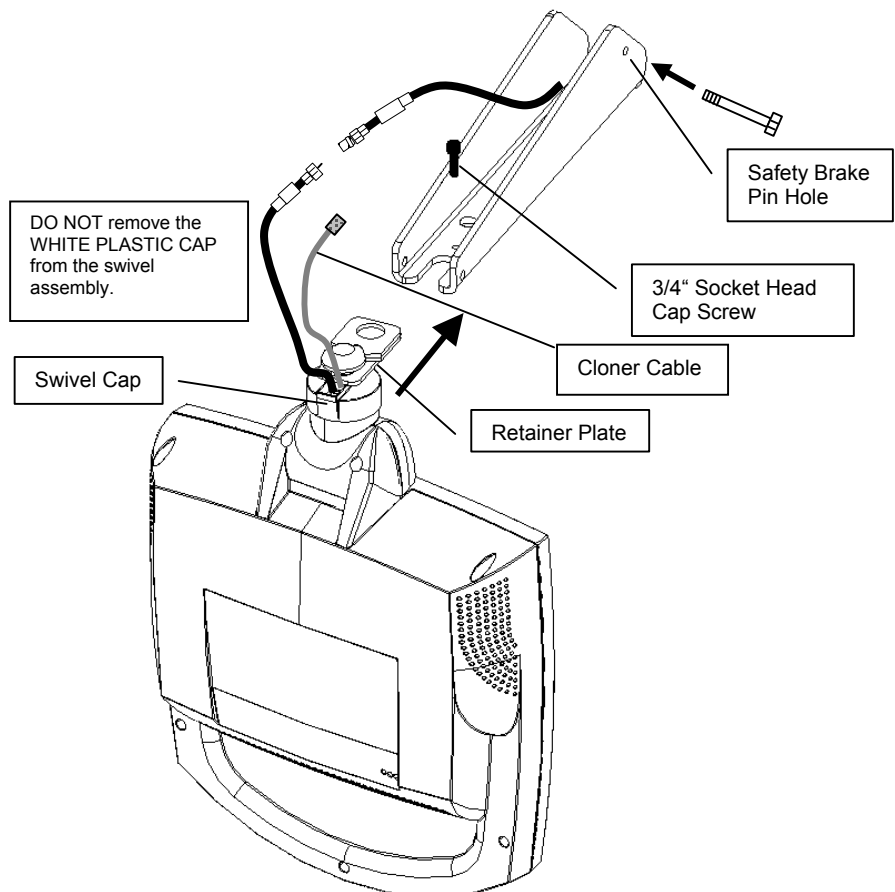
1. Read these instructions.
2. Keep these instructions.
3. Heed all warnings.
4. Follow all instructions.
5. Do not use this apparatus near water.
6. Clean only with dry cloth.
7. Do not block any ventilation openings. Install in accordance with the manufacturer's instructions.
8. Do not install near any heat source such as radiators, heat registers, stove, or other apparatus (including amplifiers) that produces heat.
9. Do not defeat the safety purpose of the polarized or grounding-type plug. A polarized plug has two blades with one wider than the other. A grounding type plug has two blades and a third grounding prong. The wide blade or the third prong are provided for your safety. If the provided plug does not fit into your outlet, consult an electrician for replacement of the obsolete outlet.
10. Protect the power cord from being walked on or pinched particularly at plugs, convenience receptacles, and the point where they exit from the apparatus.
11. Only use attachments/accessories specified by the manufacturer.
12. Use only with the cart, stand, tripod, bracket or table specified by the manufacturer, or sold with the apparatus. When a cart is used, use caution when moving the cart / apparatus combination to avoid injury from tip-over.
13. Unplug this apparatus during lightning storms or when unused for long period of time.
14. Refer all servicing to qualified service personnel. Servicing is required when the apparatus has been damaged in any way, such as power-supply cord or plug is damaged, liquid has been spilled or objects have fallen into the apparatus, the apparatus has been exposed to rain or moisture, does not operate normally, or has been dropped.



Installing TV on Suspension Arm

The PDI-P10LCDD TV is designed to attach to a wall mounted suspension arm capable of supporting a television weighing 7 pounds. The single coaxial cable on top of the unit is used to supply both low voltage AC or DC power (range 18 to 32 volts) and the RF signal to the television.

1. Remove and save the 3/4" Socket Head Cap Screw from the plastic "H" clip attached to the TV's coax cable. Remove the plastic "H" clip and discard.
2. Remove the two nose cover retainer screws. Raise the metal nose cover (not shown) and slide the television completely into the arm's clevis (slot). The swivel retainer plate should rest inside the nose of the arm and the plastic swivel cap beneath.
3. Align the retainer plate's mounting hole over the arm mounting hole. Thread the 3/4" Socket Head Cap Screw through the retainer plate and into the arm's nose. Tighten.

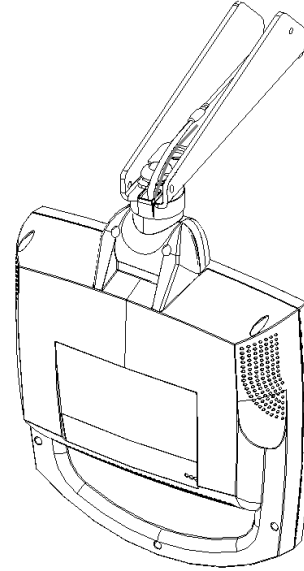


- The coax cable in the nose of the arm should be joined with the coax cable from the television. Wrench tighten the connection and cover by sliding the plastic boot sections into mating position. Lay the Cloner Cable inside the nose alongside the coax.



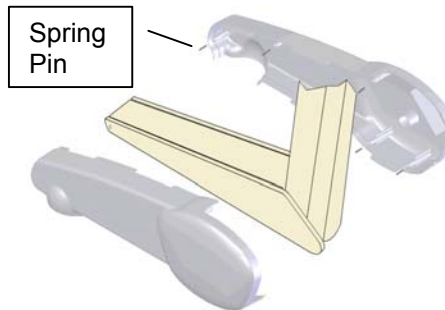
IMPORTANT: Finger only tightening of this cable connection will result in reliability problems weeks or months later. Because the TV draws its power current through this connection, eventually the finger-tightened connection will loosen, develop resistance and prompt a service call. Wrench tighten all "F" fitting connections!

- Remove the safety brake pin from the parking brake hole, reattach the acorn nut to the pin, and store the assembly inside the nose of the arm by attaching it to the coax cable using the attached plastic clip
- Remove the safety brake pin from the parking brake hole, reattach the acorn nut to the pin, and store the assembly inside the nose of the arm by attaching it to the coax cable using the attached plastic clip.
- Close the metal nose cover onto the nose. Reinstall the two nose cover retainer bolts.



- Some arm models are supplied with plastic cosmetic covers. Attach three sets of plastic arm covers (start with long "nose cover" section):

- Assemble supplied spring pins into one of the arm cover halves. Pins should be installed into one cover side only.
- Position the Arm Cover halves around the arm's nose section. Align exposed pins with the open holes in the second cover half.
- Squeeze the two halves together. When the halves are properly installed there should only be a thin seam visible where the halves meet.
- Repeat steps a, b, c for the elbow covers and base covers.



- Connect the coax cable at the base of the arm to the wall bracket "F" fitting. Wrench tighten. Cycle the arm once or twice to check for free movement.

Powering the TV

The PDI-P10LCDD is powered using low voltage along its coaxial cable from an external power supply. Two types of power supplies are available.

- INDIVIDUAL POWER SUPPLY** – This style mounts in the room inside the support arm wall bracket or on the wall near the support arm.
- CENTRAL POWER SUPPLY** – A centrally located power supply is usually located in a telephone or electrical closet on the hospital floor. A dedicated coaxial cable is routed to each bedside TV. When using a central power supply, cable selection is crucial. Due to long coax cable runs encountered in hospital installations, coax cable employing a solid copper center conductor and copper shield is required. Cable run lengths **MUST NOT** exceed 150 feet. Required coaxial cable numbers include Alpha 9804C (non-plenum), Belden 9248 (non-Plenum), West Penn 806 (non-Plenum), or West Penn 25806 (Plenum), which have been tested with coax-powered televisions.

Please consult the appropriate power supply installation instructions for further details. The remainder of the instructions assume you have correctly installed the PDI-P10LCDD with appropriate coax power and signal.

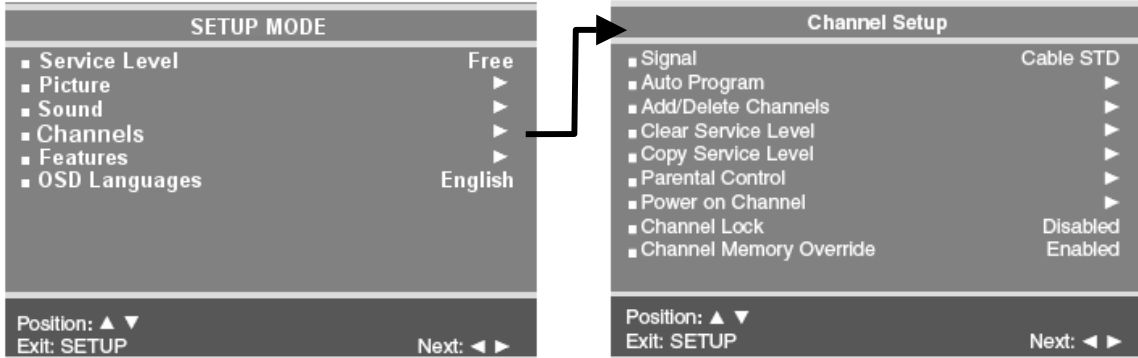
Programming the TV

NOTE: A programming remote control is required to perform all setup operations for the television. The programming remote (Part Number: PD108-420) is **NOT** packaged with the TV and must be ordered separately. The following

instructions assume you have a programming remote, have correctly mounted the TV on the support arm, and connected an RF coax cable signal.

Channel Setup

The TV offers three different programmable channel banks or Service Levels to program. Only one Service Level is usable at a time.

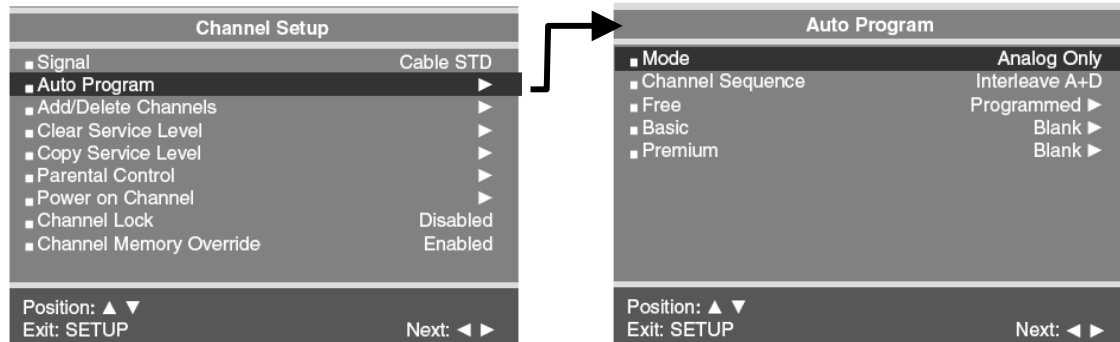


Four different tuning types are available depending upon the healthcare facilities' signal style. Selection of the correct signal type is required for the TV to recognize all possible channels and before any channel programming can begin.

1. Press the SETUP button to display the SETUP MODE menu.
2. Press the CH▲ / CH▼ button to select Channels.
3. In the CHANNEL SETUP menu, press the CH▲ / CH▼ button to select Signal.
4. Press VOL◀ / VOL▶ to select Air, Cable STD, Cable IRC or Cable HRC. NOTE: Most hospitals use the Cable STD signal style.

Auto Program



The TV automatically scans each available channel for activity. Channels that display activity are memorized into the selected Service Level.




1. From the AUTO PROGRAM menu, press the CH▲ / CH▼ button to select Mode.
2. Press VOL◀ / VOL▶ to set the scope of channel scanning.
Analog Only: TV searches for analog channels only.
Digital Only: TV searched for digital channels only.
Analog and Digital: TV searches for both analog and digital channels.
3. Press the CH▲ / CH▼ button to select the Channel Sequence menu item.
4. Press VOL◀ / VOL▶ to set the Channel Sequence in which the channels are displayed after searching.
Interleave A+D: In the order of channel number regardless of the system.
All A then D: Digital channels are displayed after all analog channels.
5. Press the CH▲ / CH▼ button to select the Service Level you wish to program. The menu displays the current programming status of each level as either Programmed or Blank. NOTE: A Programmed service level can also be re-programmed if desired.
6. Press the VOL▶ button to start auto programming.
7. A confirmation menu will appear before proceeding. Press either the CH▲ to start auto programming. Press CH▼ button to cancel the operation. The TV will now search all available channels. Press the SETUP button to return to normal TV viewing.

Additional Information

Additional information is available in the user manual. Please request document number: PD196-131.

	This symbol indicates that dangerous voltage constituting a risk of electric shock is present within this unit.
	This symbol indicates that there are important operating and maintenance instructions in the literature accompanying this unit.




	CAUTION RISK OF ELECTRIC SHOCK, DO NOT OPEN!	
CAUTION: TO REDUCE THE RISK OF ELECTRIC SHOCK, DO NOT REMOVE COVER. NO USER SERVICEABLE PARTS INSIDE. REFER SERVICING TO QUALIFIED SERVICE PERSONNEL		

THIS INSTALLATION SHOULD BE MADE BY A QUALIFIED SERVICE PERSON AND SHOULD CONFORM TO ALL LOCAL CODES. READ AND FOLLOW THE SAFETY INSTRUCTIONS BEFORE ATTEMPTING THIS INSTALLATION.

NOTE to CATV system installer: This reminder is provided to call the CATV system installer's attention to Article 820-40 of the NEC that provides guidelines for proper grounding and, in particular, specifies that the cable ground shall be connected to the grounding system of the building, as close to the point of cable entry as practical.

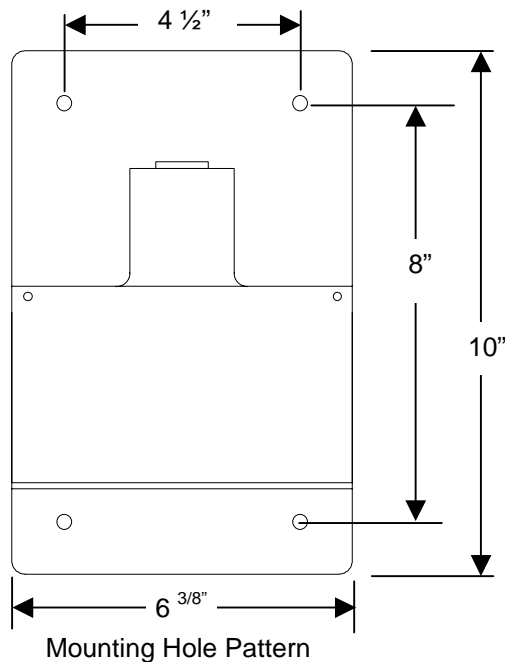
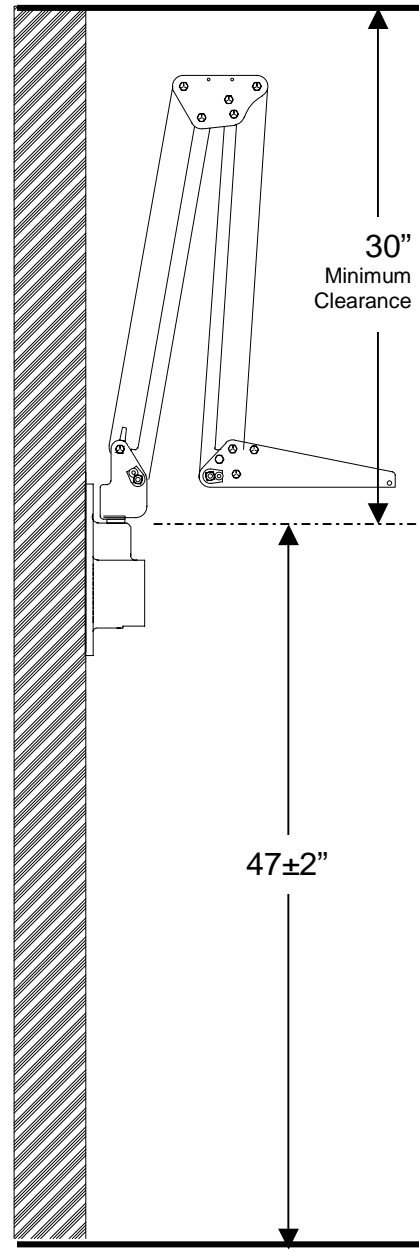
GUIDELINES

- A. **LOCATION** – Make certain that the CATV jack is near enough to the wall bracket so the "RF IN" cable can be connected to it. Also position the wall bracket near an AC wall outlet at a mounting height of 47±2 inches. See Figure 1.
- B. **WALL STRENGTH** – The wall bracket mounting instruction cover the most desirable mounting method, back-to-back bracket mounting, plus some other recommended methods depending upon wall construction. **IN ALL CASES** the wall construction must be able to support a minimum loading of **350 PSI** applied perpendicular to the mounting hole locations by compression or tension. Some wall construction may require internal bracing to accept the minimum loading required.
- C. **HARDWARE REQUIREMENTS** –

PDI-271 Cap Cover	Customer Supplied Fastener (4 Required)	PDI-272 Cap Washer
		

Mounting fasteners are NOT supplied with the wall bracket. Finishing Cap Covers and Cap Washers are supplied.

 1. All threaded rods, bolts or machine screws will be 1/4"-20UNC-2A thread or equivalent.
 2. The back-up plate is a 6-1/2" x 10", 11 gauge metal plate, with four 9/32" holes that coincide with the wall bracket. A pre-fabricated backing plate, PDI-218, is available directly from PDI.
 3. All threaded rods will be finished off with an acorn nut.
 4. All Fastener heads to be covered with PDI-271 Cap and PDI-272 Washer.
- D. **TOTAL WEIGHT** of the PDI-Z9TV receiver and support arm system is approximately 41 lbs.



Mounting Height
Figure 1.

BACK-TO-BACK MOUNTING

Refer to Figure 2.

1. Position the mount so the bolt pattern straddles an interior wall stud and is near an antenna CATV jack and AC wall outlet. Adjust the mounting height to a distance of 47±2" from the floor to top of pivot hole as shown in figure 1. It is also important that the mounting location be approximately 15" from the patient's bed. Please note also that the suspension arm requires a minimum clearance distance of 30" from ceiling to the top of the wall bracket. A check with the contractor/architect or Hospital Engineering Department regarding hidden objects behind the wall should be made before proceeding with this installation and final operation of the arm assembly.
2. Place a spirit level along the top surface of wall mount pivot hole and adjust for a true horizontal position. Then mark the location of the mounting holes.
3. Drill the top holes completely through the wall with 9/32" bit.
4. Drill the bottom mounting holes half-way through the wall and complete the holes from the opposite side. NOTE: All holes must be drilled perpendicular to the wall so that they are spaced 4-1/2" on horizontal centers and 8" on vertical centers on the opposite side of the wall.
5. Place a hex nut 5/16" on one end of each 1/4" threaded rod through the top mounting holes and through the top wall holes. Hold the wall bracket and rods in place and have an assistant fasten the mounting bracket in the opposite wall through the top holes using hex nuts. Tighten the nuts to a snug fit.
6. Cut the threaded rods 5/16" from the outside surface of the hex nut. Install and tighten cap nuts on rods.
7. Insert the additional threaded rods through the bottom mounting holes. Fasten, cut, and finish the rods as previously described in steps 5 and 6.

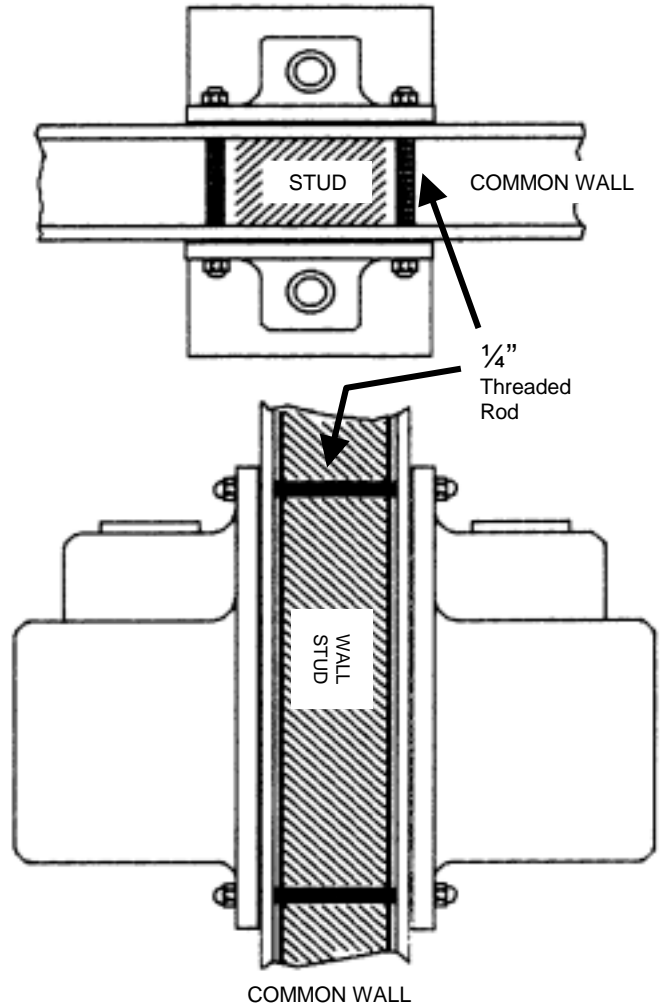


Figure 2.

BACK-UP PLATE MOUNTING

Refer to Figures 3 and 4.

1. Complete the first four steps 1 through 4 as previously describe under "BACK-TO-BACK MOUNTING."
2. Place a hex nut 5/16" from one end of threaded rod. Tighten cap nuts on rods so that the nut faces are even. Insert the threaded rods through the top and bottom mounting holes.
3. Hold the rods in place and have an assistant place and secure the back-up plate o the opposite wall using hex nuts. Cut the threaded rods 5/16" from the outside surface of the hex nuts. Install and tighten cap nuts on rods.

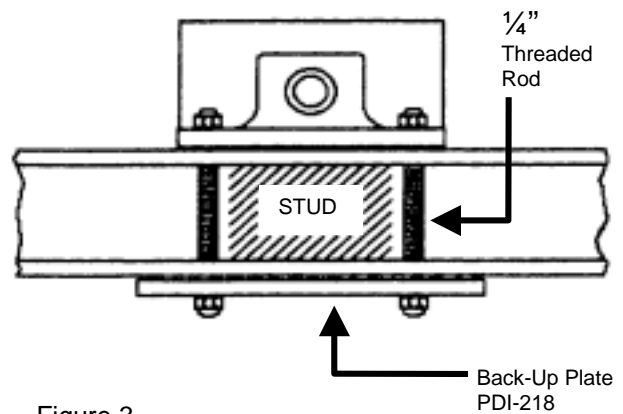


Figure 3.

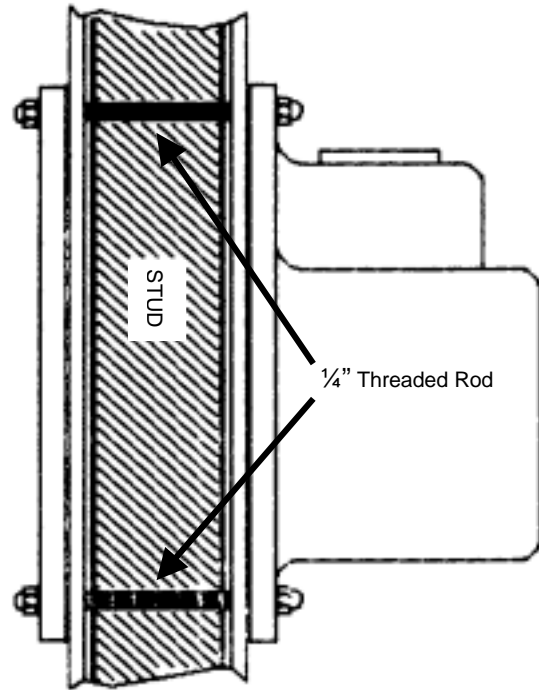
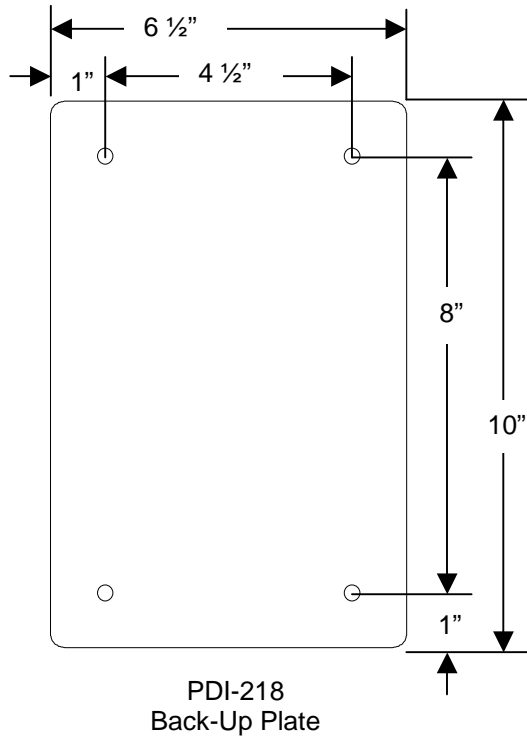


Figure 4.

OTHER MOUNTING METHODS

There are other methods to mount the wall bracket, but the **PREFERRED** mounting is a back-to-back system or back-up plate system as described. The mounting method used must meet the requirements as described in **GENERAL GUIDELINES**. The following mounting methods may be used if the previously listed precautions are adhered to.

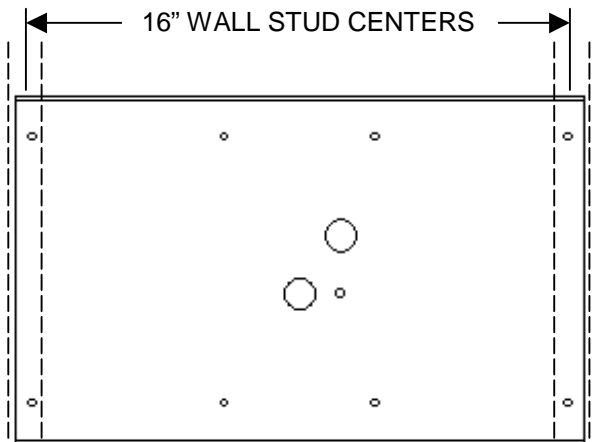
- SOLID CONTRUCTION WALLS** – Concrete, brick, and some types of cement block, cement expansion anchors can be used.



Special tests should be performed on the wall before installation of the expansion anchors in the area of the bracket mounting location. Proof test the load for the anchors to 1600 inch-pounds in tension.

It is the responsibility of the architect and/or structural engineer, in general responsible charge of the project, to sign and submit the necessary calculations that show the adequacy of the wall where the TV arm and mounting bracket will be installed. Drill four, 3/8" diameter holes that correspond to the wall bracket mounting bolt pattern to a minimum depth of 2 1/2". Install four 3/8" x 2 1/2" HILTI KWIK BOLT cement anchors. Position the wall bracket over the exposed mounting holes. Thread bolt and washer through bracket and into hole. Tighten all bolts.

- FABRICATED BACKING PLATE** – A fabricated plate is used that holds welded-on or pressed-in studs. The studs (1/4"-20UNC-2A) would be located on hole centers that coincide with the wall bracket. The plate is then secured to the wall studs. A prefabricated plate PDI-254I or PDI-254I-24 is available from PDI see figure 5. An external plate is also available. Consult the backing plate instructions packed with each plate for installation details.



PDI-254I Internal Backing Plate
- or -
PDI-255E External Backing Plate

NOTE:
PDI-254I-24 Internal Backing Plate
- or -
PDI-255E-24 External Backing Plate
for 24" wall stud centers.

Figure 5.

OPERATION & SAFETY INSTRUCTIONS

REFER TO FIGURE 6.

1. Attach coaxial cable from ARM to "F" Fitting marked "RF/AC OUT" or "RF/DC OUT". Wrench tighten.
2. Attach coaxial cable from Master Antenna TV System to "F" fitting marked "RF IN". Wrench tighten.
3. Plug in line cord to 120 VAC outlet.

IMPORTANT SAFETY INSTRUCTIONS

Save these instructions for future reference.

Unplug this unit from the wall outlet before cleaning. Do not use liquid cleaners or aerosol cleaners. Use a damp cloth for cleaning.

This unit does not require periodic maintenance other than cleaning.



WARNING: TO REDUCE RISK OF FIRE OR ELECTRIC SHOCK, DO NOT EXPOSE THIS POWER SUPPLY TO RAIN OR MOISTURE.



THIS SUPPLY FOR USE ONLY WITH UL LISTED TV RECEIVER MARKED TO INDICATE USE WITH THIS POWER SUPPLY.



CAUTION: TO REDUCE THE RISK OF ELECTRIC SHOCK, DO NOT REMOVE COVER. NO USER SERVICEABLE PARTS INSIDE. REFER SERVICING TO QUALIFIED SERVICE PERSONNEL.

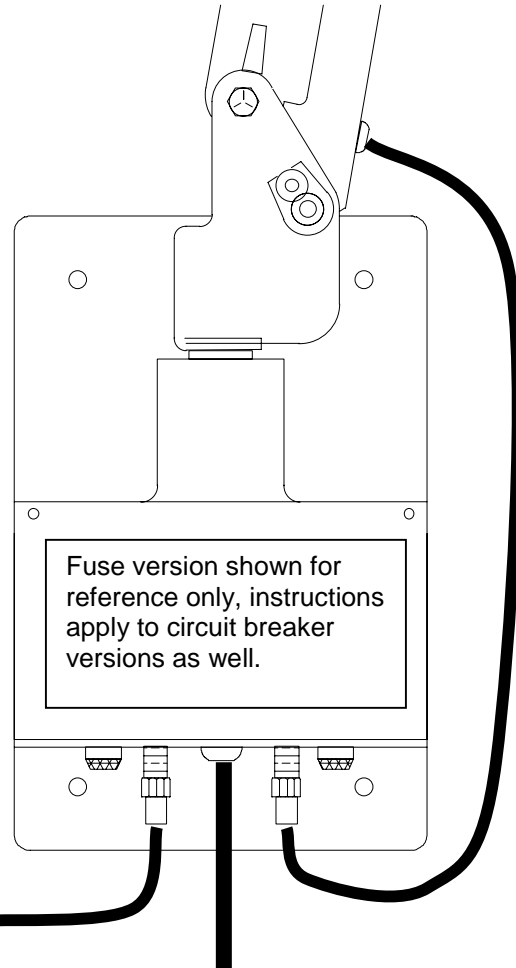


Figure 6.

ACCESSORIES

PDI-244	ARM ROTATIONAL STOP KIT - SINGLE
PDI-244D	ARM ROTATIONAL STOP KIT - DUAL
PDI-254I	INTERNAL MOUNTING PLATE FOR 16" O.C. WALL STUDS
PDI-255E	EXTERNAL MOUNTING PLATE FOR 16" O.C. WALL STUDS
PDI-254I-24	INTERNAL MOUNTING PLATE FOR 24" ON CENTER WALL STUDS
PDI-255E-24	EXTERNAL MOUNTING PLATE FOR 24" ON CENTER WALL STUDS