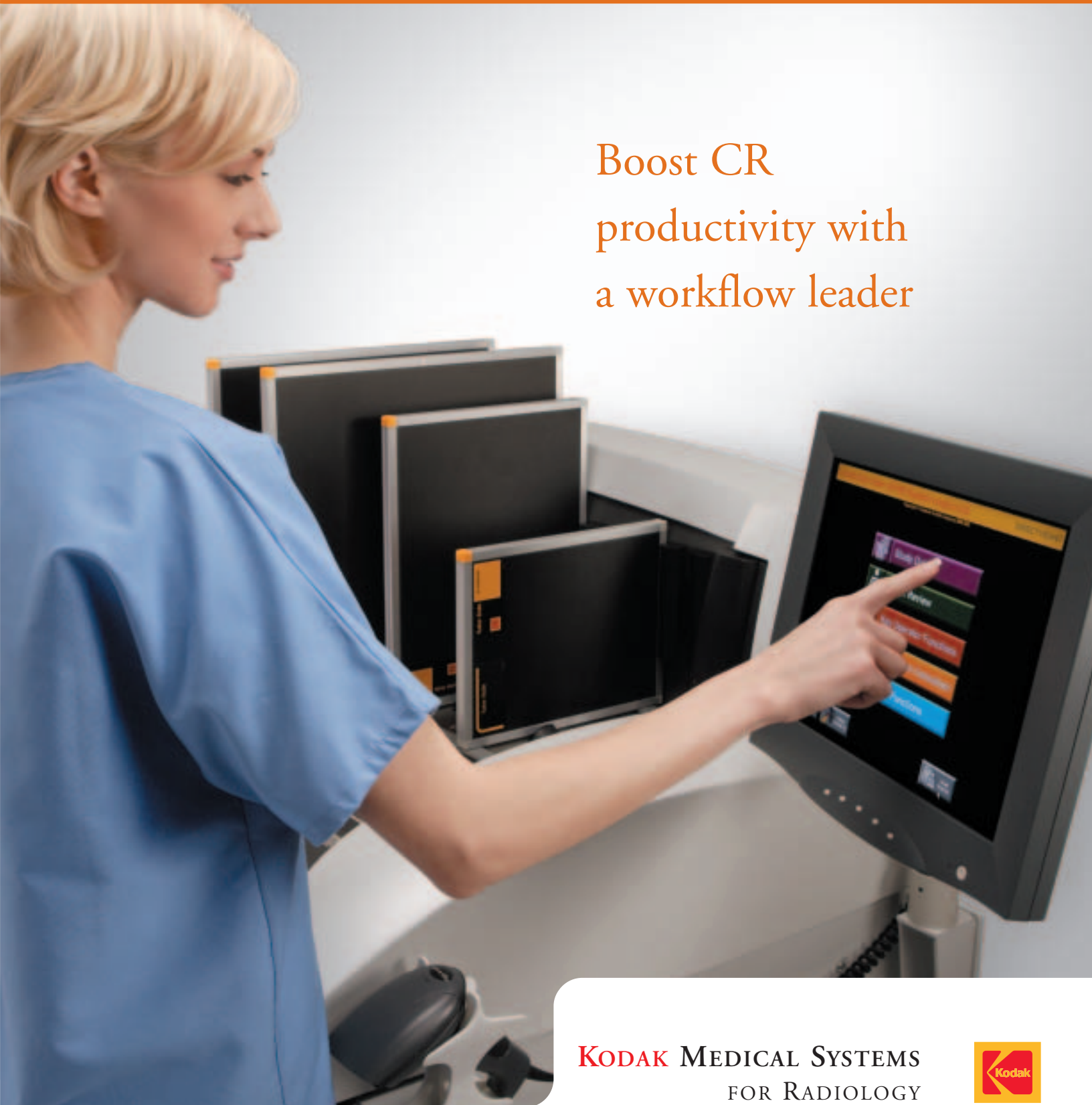


KODAK DIRECTVIEW CR 975 SYSTEM

Boost CR
productivity with
a workflow leader



KODAK MEDICAL SYSTEMS
FOR RADIOLOGY



KODAK DIRECTVIEW CR 975 SYSTEM

"DROP-AND-GO" CASSETTE PROCESSING,

Maximize throughput, productivity, and patient satisfaction with the KODAK DIRECTVIEW CR 975 System. A next-generation workflow leader, this system has been developed in direct response to customer feedback and evolving technology. The CR 975 System provides "drop-and-go" cassette processing that reduces radiographer queuing and waiting at the reader. Processed images can be sent automatically to pre-selected destinations without manual intervention. Distributed workflow is achieved with a wall-mounted KODAK DIRECTVIEW Remote Operations Panel, allowing study functions

to be performed in the examination room. As a result, radiographers are free to spend more time with each patient, and more time performing examinations. Key improvements include faster throughput, easier cassette loading, expanded software capabilities, and reduced service-access requirements for greater placement flexibility. Part of Kodak's broad digital portfolio, the KODAK DIRECTVIEW CR 975 System offers the image quality, reliability, support, and service you expect from Kodak.



REMOTE OPERATIONS PANEL—AND MORE!

FAST THROUGHPUT

- Process up to 101 cassettes an hour.
- Handle 16 cassettes at one time: up to 8 queued for processing, and 8 erased and ready for new imaging studies.
- Cassette is ready to reuse in 40 seconds.*
- Review an image in 34 seconds at a Kodak DirectView remote operations panel.*
- “Drop-and go” workflow virtually eliminates radiographer queuing at the reader and allows you to forward images directly to multiple network destinations (laser imager, diagnostic workstation, or archive) without radiographer intervention.
- Print the first image on film in 135 seconds using a Kodak DryView 8900 laser imager.

**For 35 x 43 cm cassette. Times for other radiography cassette sizes are the same or less. Time for image at a network device is dependent on network performance.*



ENHANCE WORKFLOW AND PRODUCTIVITY

- Complete an exam in as few as four screens depending on system configuration.
- Save time and effort with a bar-code reader for patient/cassette/exam ID.
- Perform virtually all study functions in the examination room with a wall-mounted Kodak DirectView remote operations panel—reducing time away from the patient and improving patient satisfaction.
- Reprocess images if needed during image review—reducing the cost, time, dose, and inconvenience of repeat exposures.
- Integrate CR and DR systems together with the optional Kodak DirectView capture link system to streamline workflow when a study includes CR and DR images.

INTUITIVE, POWERFUL USER INTERFACE

- Learn and use the system quickly with an intuitive interface designed for simple, consistent operation across all Kodak DirectView CR and DR systems.
- Use the same interface at the unit's 15-inch flat-panel touch screen and at the remote operations panel.
- Pre-select up to 24 unique profiles of multiple destinations.
- Customize and preset image display parameters to suit department preferences.
- Choose the order in which patient records appear on the work list screen to suit user preference—alphabetical, oldest first, newest first.
- Take your choice of 10 languages—Chinese, English, French, German, Italian, Japanese, Norwegian, Portuguese, Spanish, or Swedish.

“Kodak’s (DirectView EVP) image processing software... provides optimal viewing of structures with vastly different densities, which is a tremendous advantage.”

Dr. Donald Miller, President, Radiology Group
Marion General Hospital and Marion Area
Health Center, Marion, Ohio

MAINTAIN HIGH DIAGNOSTIC STANDARDS

- Process images with built-in state-of-the-art Kodak DirectView PTS image processing software, which uses a perceptual tone scale algorithm to support multiple exam types and body parts.
- Take image quality and diagnostic confidence to a new level with optional Kodak DirectView EVP software that provides extended image latitude without loss of detail contrast.
- Optimize image viewing with optional Kodak black surround/masking software.
- Improve image quality through optional automatic detection and suppression of gridline artifacts.

IMAGE PREPARATION AND PRODUCTIVITY FEATURES

- Improve image preparation with a configurable text box.
- Accept all study images without the need to access each individual image.
- Increase image quality and reduce retakes by magnifying an image area from one-quarter to full resolution to help identify patient position and movement.
- Reduce keystrokes by preloading procedure and exam information.
- Automatically remove patient records cancelled by the HIS/RIS from the CR database.
- Use an enhanced trauma button to quickly select a custom patient record when multiple trauma patients must be imaged.
- Promote productivity by identifying areas for improvement with an optional “reject image reason” data-entry tool.



- Optional Kodak DICOM work list management service class user software lets you obtain patient information directly from the HIS/RIS, eliminating the need for the radiographer to enter this information at the CR.
- Optional IHE scheduled workflow software automatically notifies the HIS/RIS of exam status to increase productivity with consistent patient and ordering information.

SIMPLER IMAGE MANAGEMENT

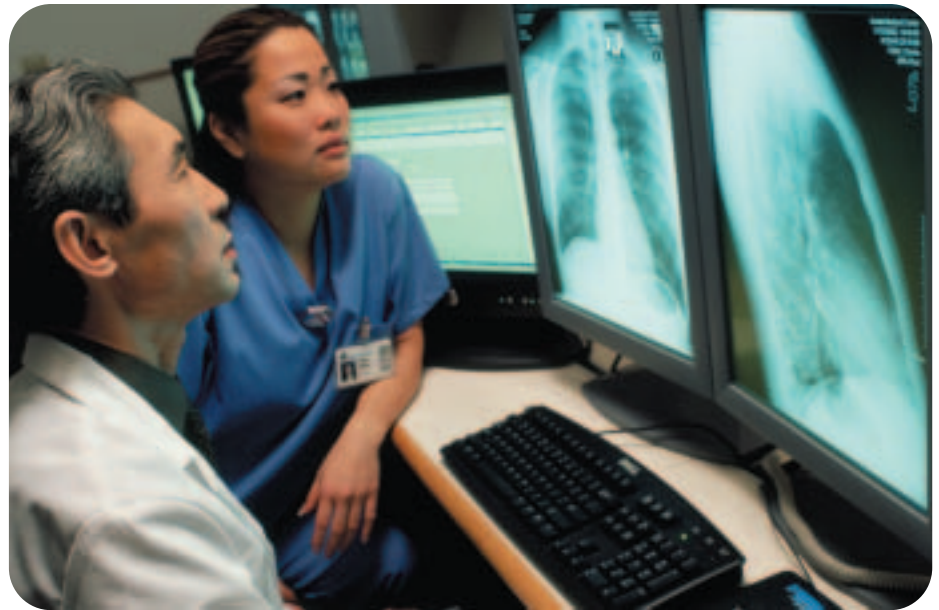
- Store approximately 2,000 images online for rapid recall.
- Minimize errors with a system configuration that prohibits distribution without image approval.
- Route images automatically to multiple DICOM destinations.
- Users are alerted when patient data are incomplete or image delivery is pending.
- View the status of the last printer to which the system forwarded an image.
- Avoid image loss from power failure with standard on-board, uninterruptible power supply (UPS).

PATIENT DATA PROTECTION

- Configure the system to require entry of user name and password.
- Guard against unauthorized viewing of an unattended system with an automatic security screensaver.
- Minimize threats from worms and other malware with a built-in firewall.
- Use optional security audit log software with system login to prevent unauthorized users from accessing data stored in the CR system and track access to specific images to support privacy regulation requirements.

KODAK RIS, PACS, INFORMATION MANAGEMENT SOLUTIONS

- Provide a totally integrated, enterprise-wide radiology suite that automates the various elements of the diagnostic exam process.
- Together, Kodak RIS, PACS, and information management solutions enable highly efficient diagnostic reporting and clinical review.
- Facilitate easy storage, retrieval, and distribution of a patient's entire radiology record—all through a synchronized desktop.
- Share and leverage images and information across multiple departments.
- Improve productivity, enhance patient services, and reduce network and storage infrastructure costs.



CHOICE OF PRINTING OPTIONS

- Print CR images on film with a choice of Kodak DryView laser imagers. They can be configured to receive CR images automatically.
- Use a Kodak DryView 8900 laser imager and select from five film sizes including up to three online, all at 650 dpi resolution.
- Print true-size images using *any* Kodak DryView laser imager.
- Have flexibility to format with multiple images on a single sheet of film.

EXPERT NETWORK SERVICE AND SUPPORT

- Maximize your network throughput, performance, and reliability with Kodak healthcare network services.
- Count on Kodak as your single point of contact for expert network consulting, assessment, design, implementation, support, and monitoring.
- Check with your local Kodak representative for network service availability.

REMOTE MANAGEMENT SERVICES

- Secure remote diagnostics and service can help resolve issues promptly and reduce service calls.
- Proactive notification to Kodak service centers helps optimize imager uptime.
- Remote assessment enables service personnel to arrive on-site with appropriate parts, expediting service.

ACCESSORIES AND OPTIONS

The following optional accessories and software expand the capabilities of your Kodak DirectView CR system. Each of these is offered individually so that you can choose and purchase the options that meet your needs. For further information, contact your Kodak sales representative and request a copy of M1-311, or visit www.kodak.com/go/medical.

KODAK DIRECTVIEW REMOTE OPERATIONS PANEL

Extend CR 975 system reach and functionality with this wall-mounted touch-screen panel that allows radiographers to perform most system functions away from the main unit. Network up to 10 remote operations panels to a single Kodak DirectView CR system. Or network one remote operations panel to as many as eight CR systems.



KODAK DIRECTVIEW TOTAL QUALITY TOOL

Perform your own objective image tests and QC measurements with the same interface used for examinations. Test at your convenience—without the cost, scheduling, or disruption of third-party testing.



KODAK DIRECTVIEW EVP SOFTWARE

Take image quality and diagnostic confidence to a new level with this technological breakthrough that extends image latitude without loss of detail contrast. All raw image data are used and retained during image processing and enhancement.

KODAK DIRECTVIEW CAPTURE LINK SYSTEM

Link up to five Kodak DirectView CR and/or DR systems to improve workflow and productivity in high-volume areas. Share cassette identification, scanning, and image review functions on linked CR systems. Enable CR cassette identification and image review at the DR console.

KODAK DIRECTVIEW CR LONG-LENGTH IMAGING SYSTEM

Capture long-bone computed radiography images—full leg and full spine—with this easy-to-use accessory. Fully automatic and highly reliable stitching software delivers images up to 17 inches wide by 51 inches long (43 x 129 cm), with few, if any, visible seams.

KODAK DIRECTVIEW REMOTE PATIENT DATA ENTRY SOFTWARE

Increase productivity, improve workflow, and enhance patient satisfaction with remote entry of patient data. Enter demographic data for exams with a PC at the radiology reception desk or other preferred location. Enable your radiographer to spend more time performing examinations.



KODAK DIRECTVIEW MAMMOGRAPHY FEATURE FOR CR[†]

Bring the convenience and image quality of the CR 975 system to digital mammography. This feature, coupled with Kodak DirectView CR mammography cassettes and EHR-M screens, delivers mammography quality images while retaining all CR system features and capabilities for general radiography examinations.

[†]Not for sale in the United States or Canada.

KODAK DIRECTVIEW CR 975 SYSTEM

PRODUCT SPECIFICATIONS



DIMENSIONS

- Height: 52 in. (132.1 cm)
[41 in. [104.1 cm] at cassette station]
- Width: 41 in. (104.1 cm)
- Depth: 30 in. (76.2 cm)
- Weight: 956 lb. (433.6 kg)
- Monitor: 15.0 in. flat-panel touch screen, full color, 1024 x 768 matrix

THROUGHPUT

- Capable of handling up to 8 exposed cassettes and 8 erased cassettes at a time
- Throughput: up to 101 cassettes/hour
- Time from cassette insertion to image at network: 34 seconds or less*

*For 35 x 43 cm cassette. Times for other radiography cassette sizes are the same or less. Time for image at a network device is dependent on network performance.

Cassette Size	Cassette Type	Cassettes per Hour
15 x 30 cm**	GP	121
18 x 24 cm	GP	100
24 x 30 cm	GP	91
35 x 35 cm	GP	101
35 x 43 cm	GP	91
35 x 43 cm long-length imaging	GP	84
18 x 24 cm	HR	101
24 x 30 cm	HR	77
18 x 24 cm***	EHR	TBD
24 x 30 cm***	EHR	TBD

** For dental applications
*** For mammography imaging

GRAYSCALE RESOLUTION

- 4096 (12-bit grayscale)

POWER

Includes an on-board, uninterruptible power supply (UPS)
100–120 VAC 10 Amps 50/60 Hz
200–240 VAC 5 Amps 50/60 Hz

HEAT DISSIPATION

1400 BTU/HR Max

NETWORK

10 BASE-T, 100 BASE-T Network Adapter

REGULATORY

- FDA, UL, cUL, CE Mark
- System is certified as a casual patient contact medical device

CASSETTE OPTIONS

- Kodak DirectView CR cassette/with GP screen / 35 x 43 cm, 35 x 43 cm for long-length imaging, 35 x 35 cm, 24 x 30 cm, 18 x 24 cm, and 15 x 30 cm
- Kodak DirectView CR cassette/with HR screen / 24 x 30 cm and 18 x 24 cm
- Kodak DirectView CR mammography cassette/with EHR screen / 24 x 30 cm and 18 x 24 cm

MORE INFORMATION

Learn more about the Kodak DirectView CR 975 system and Kodak's other products for enhanced CR performance. Contact your Kodak representative. Call 1-877-TO-KODAK (1-877-865-6325), ext. 227. Or visit www.kodak.com/go/cr.

Health Group
EASTMAN KODAK COMPANY
343 State Street
Rochester, NY 14650
1-877-TO-KODAK (1-877-865-6325), ext. 227

KODAK CANADA INC.
3500 Eglinton Avenue West
Toronto, Ontario M6M 1V3
CANADA

Outside the U.S. or Canada,
please contact your local Kodak company.

www.kodak.com/go/cr

HEALTH GROUP
A BETTER VIEW OF LIFE.



11917